



HairZing 101 4 Easy Steps to Getting Started



Our combs are unique and essentially work “backwards” so forget everything you’ve ever been taught about wearing hair combs. Once you understand these **Four Easy Keys**, the Step-By-Step hair style demonstrations will teach you to create styles from start to finish.

Step 1. Hold Comb Correctly

Step 2. Gather Hair & Slide Comb Flat

Step 3. Hold One Comb & S-T-R-E-T-C-H the Other Comb

Step 4. 100% ADJUSTABLE for Comfort

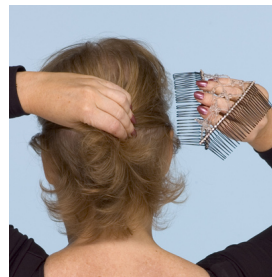
Step 1: Hold Comb Correctly



Start by holding the curve of the first comb as shown. It should be pointing downward—looking like the letter “U” turned upside down.

Fingers of first hand come up from underneath the comb. The thumb rests under the curve and the other four fingers continue up THROUGH the bands to rest on top of the curve.

Step 2: Gather and Slide



Gather the hair you want held back with your “free” hand (often the left hand) BEFORE you start to slide the first comb into place. **Work with one comb at a time!**

SLIDE COMB #1 FLAT into your hair, teeth gently in contact with your scalp. STOP when comb spine is 1-2 inches past first ear.

Step 3: Hold one Comb and S-T-R-E-T-C-H the Other



Hold Comb #1 in place during this step by pressing down on it with the heel / palm of your first hand.

Reach fingertips through bands and grasp hair being held in left hand.

Now that left hand is free, grab onto Comb #2 and S-T-R-E-T-C-H it towards your opposite (left) ear. DON'T be afraid to stretch the combs wide—the resin is extremely strong and won't break.

TURN the teeth down until they touch your scalp, Tuck comb under and Slide back into your hair so Combs face each other underneath.

Step 4: 100% Adjustable for Comfort



Stretching the combs apart gives the bands greater HOLDING POWER. It is a common thought to “push” the combs together, or to “interlock” the teeth, but that will only make HairZing loosen...not tighten.

The closer to your ears the comb spines are, the more secure, stronger and tighter hold you will feel. (Bands are widely stretched.)

The CLOSER together the comb teeth are pushed—the looser the hold will be. (Less tension between the bands.)

